 <b>WHITE GOODS</b>	<b>COMBI 3651</b>	<b>CUSTOMER SUPPORT</b>
	<b>ASSEMBLE &amp; DISASSEMBLE</b>	

### Changing The Door Swing Direction to Right Hand

1- Unscrew the two screws which are fixing the middle hinge. (Fig-1) Also remove the two middle hinge screw caps (big) on the left side.



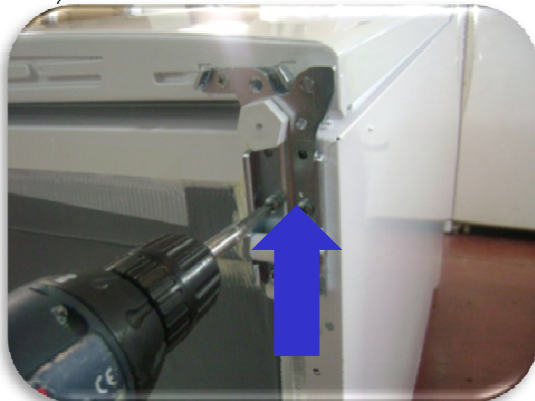
**Figure-1**

2- Dismantle the refrigerator and freezer door from cabinet by pulling towards to you together with the middle hinge. (Fig-2)

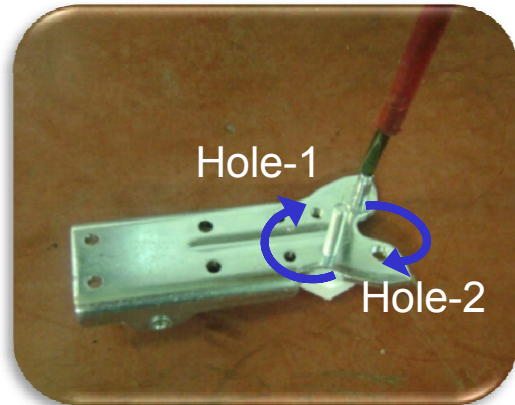


**Figure-2**

3- Unscrew the bottom hinge fixing screws and remove it. (Fig-3-1) Unscrew the stationary foot of bottom hinge and screw to Hole-1. Unscrew the hinge pin and screw the pin to Hole 2. (Fig-3-2)

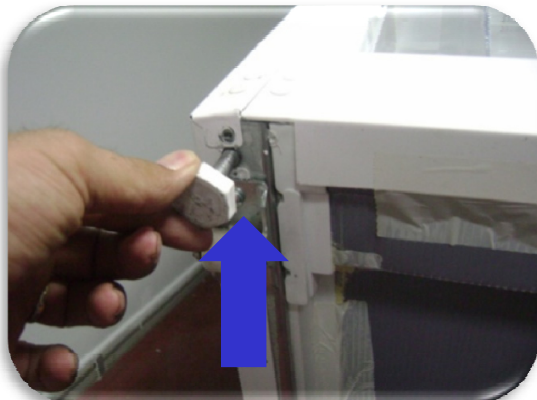


**Figure-3-1**

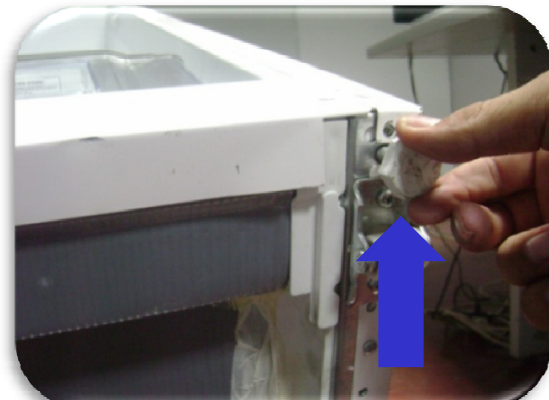


**Figure-3-2**


4- Unscrew the stationary foot and front wheel (Fig-4-1) and screw the right side. (Fig-4-2)



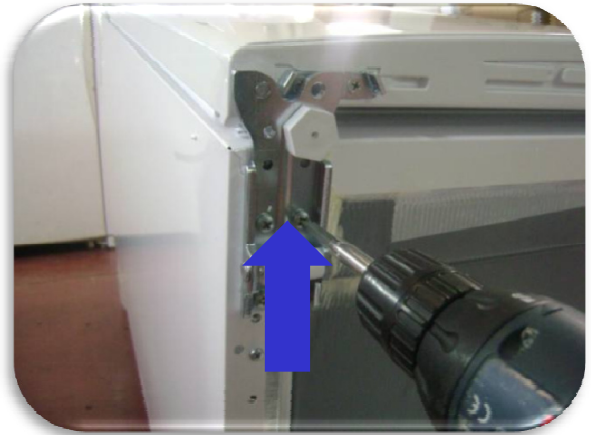
**Figure-4-1**



**Figure-4-2**

 <b>WHITE GOODS</b>	<b>COMBI 3651</b>	<b>CUSTOMER SUPPORT</b>
	<b>ASSEMBLE &amp; DISASSEMBLE</b>	

5- Screw the bottom hinge to the left side . (Fig-5)



**Figure-5**

6- Remove the two big caps on the left. (Fig-6.1) Insert the two big caps to the right side. (Fig-6.2) (You can find the new caps in the user manual bag)

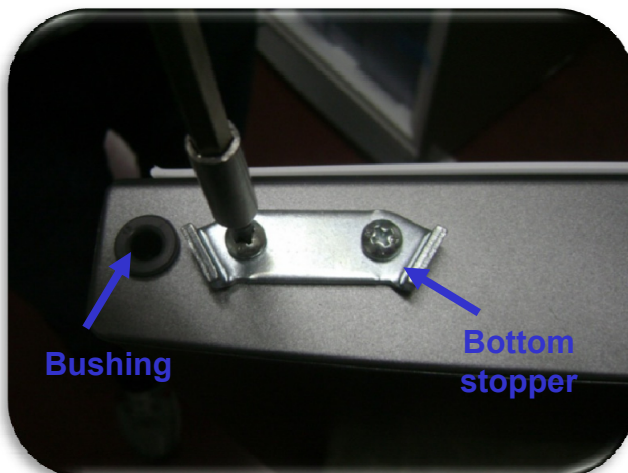


**Figure-6.1**



**Figure-6.2**


7- Remove the freezer door bottom bushing and bottom stopper (Fig-7.1) then insert them the left side. (Fig-7.2)



**Figure-7.1**



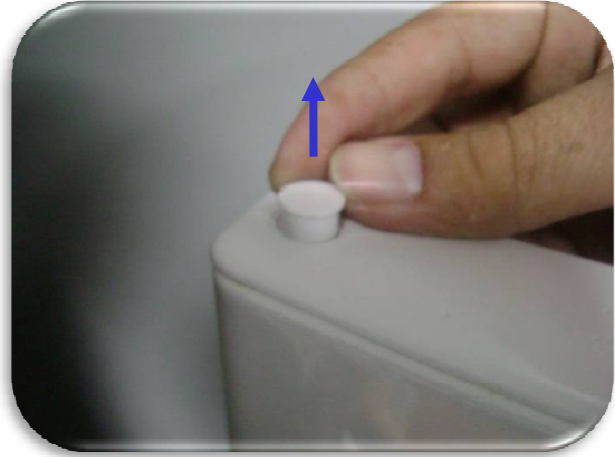
**Figure-7.2**

 <b>WHITE GOODS</b>	<b>COMBI 3651</b>	<b>CUSTOMER SUPPORT</b>
	<b>ASSEMBLE &amp; DISASSEMBLE</b>	

8- Replace the freezer door top bushing (Fig-8.1) and top bushing cap. (Fig-8.2)



**Figure-8.1**



**Figure-8.2**


9- Remove the refrigerator door right catcher (Fig-9.1) then assemble the left catcher to the left. (Fig-9.2) (You can find the left door catcher in the user manual bag)



**Figure-9.1**



**Figure-9.2**

 <b>WHITE GOODS</b>	<b>COMBI 3651</b>	<b>CUSTOMER SUPPORT</b>
	<b>ASSEMBLE &amp; DISASSEMBLE</b>	

**10.** Assemble the freezer door. Turn the middle hinge by 180°. Fix the middle hinge by tightening the screws. (Fig-10.1) Assemble the refrigerator door. (Fig-10.2)

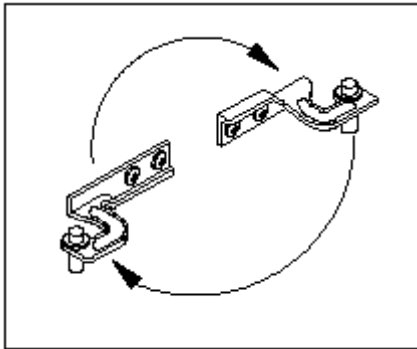


**Figure-10.1**



**Figure-10.2**

**11-** Unscrew the pin of the top hinge, turn the top hinge by 180° then screw it to the left side hinge holes and screw the pin of the top hinge (Fig-11.1 / Fig-11.2)



**Figure-11.1**




**Figure-11.2**

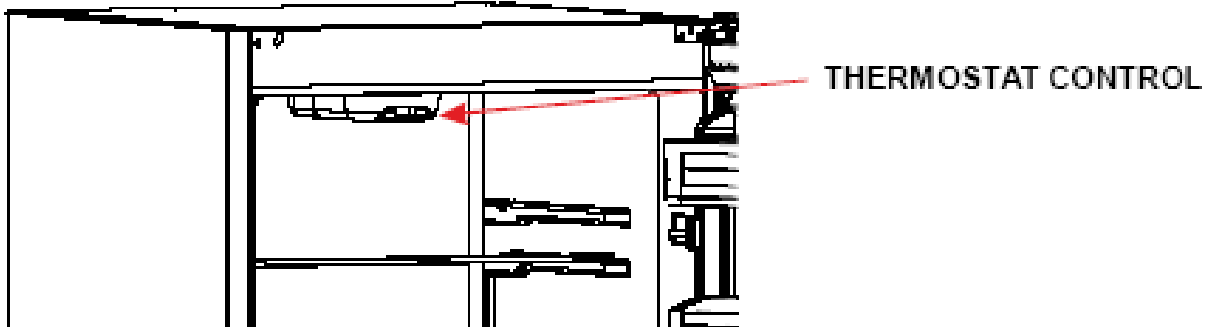
**12-** Insert the top hinge cover (which is put in the user manual bag) to the left side. (Fig-12)



**Figure-12**

 <b>WHITE GOODS</b>	<b>COMBI 3651</b>	<b>CUSTOMER SUPPORT</b>
	<b>INSTRUCTIONS</b>	

## Thermostat Setting



Freezer thermostat automatically regulates the inside temperature of the compartments. By rotating the knob from position 1 to 5, colder temperatures can be obtained.


**Important note:** Do not try to rotate knob beyond 1 position it will stop your appliance.

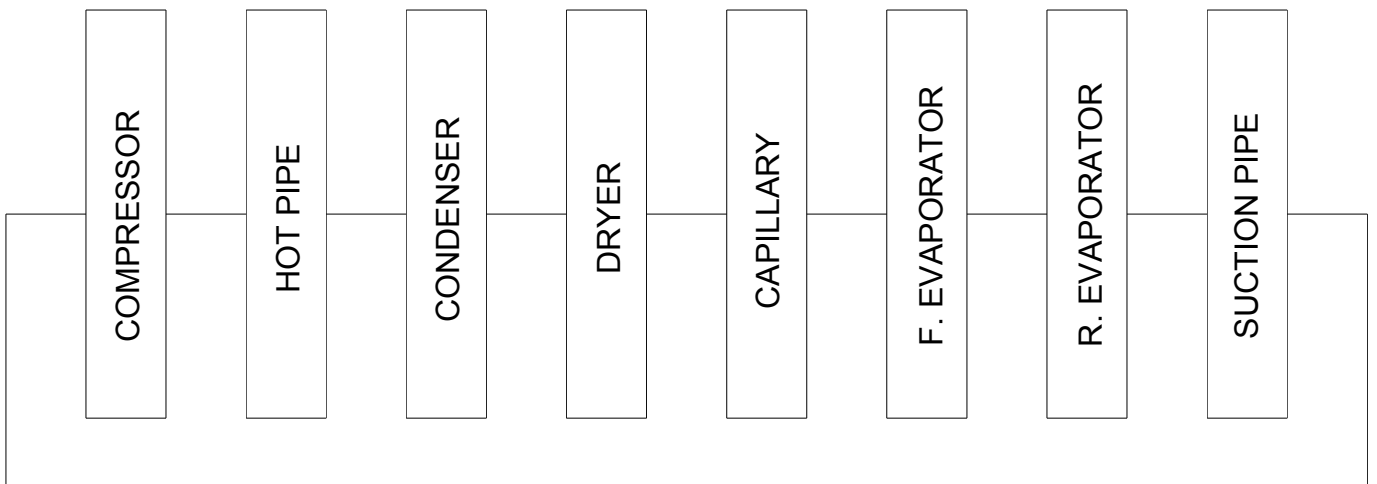
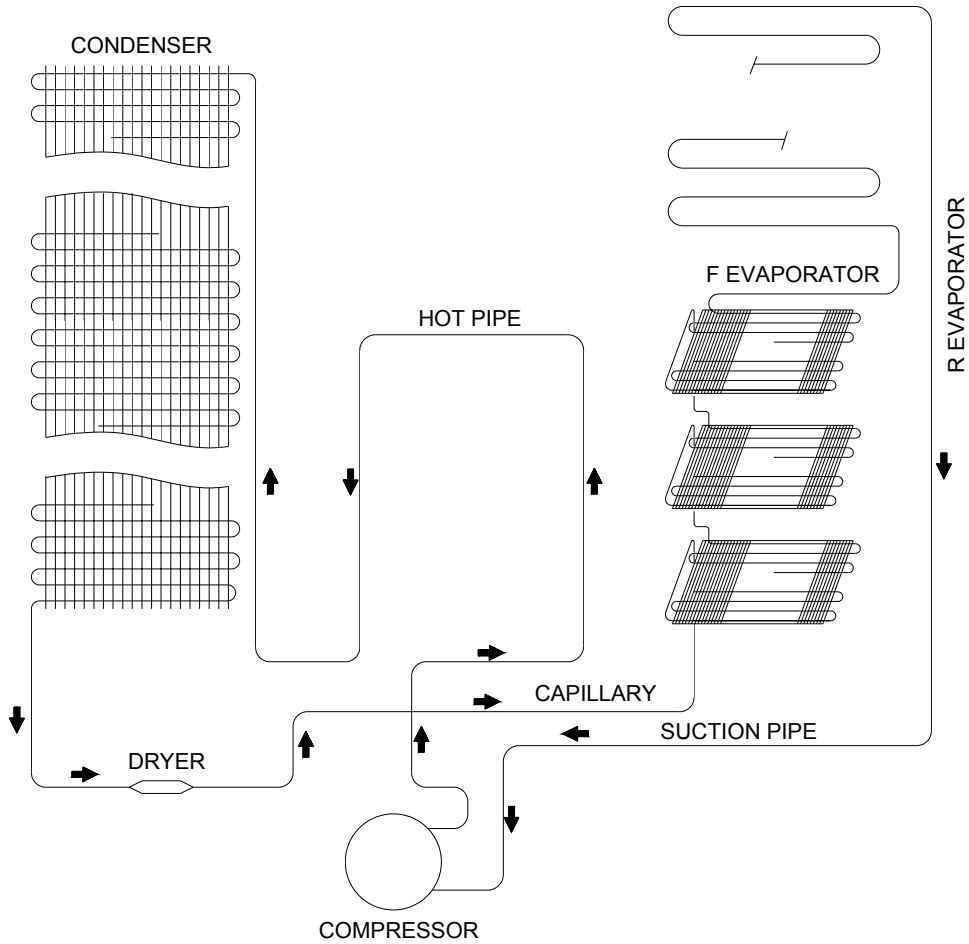
### **Freezer & Refrigerator Thermostat Setting;**

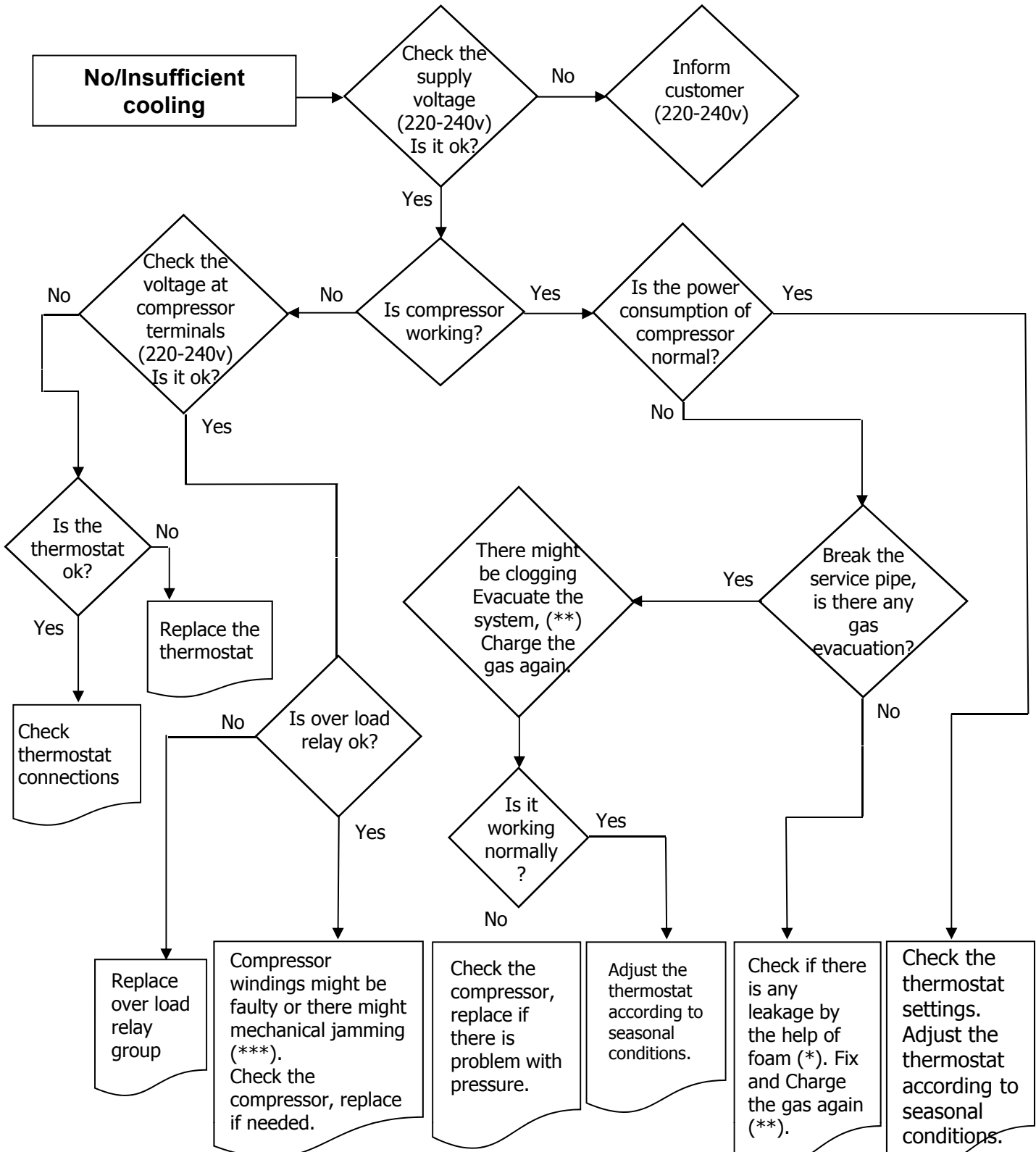
**1 – 2 :** For short-term storage of food in the freezer compartment, you can set the knob between minimum and medium position.

**3 – 4 :** For long-term storage of food in the freezer compartment, you can set knob medium position.

**5 :** For freezing the fresh food. The appliance will work longer. So after you get the cold condition you must position to previous position.

 <b>WHITE GOODS</b>	<b>COMBI 3651</b>	<b>CUSTOMER SUPPORT</b>
	<b>REFRIGERANT CYCLE DIAGRAM</b>	

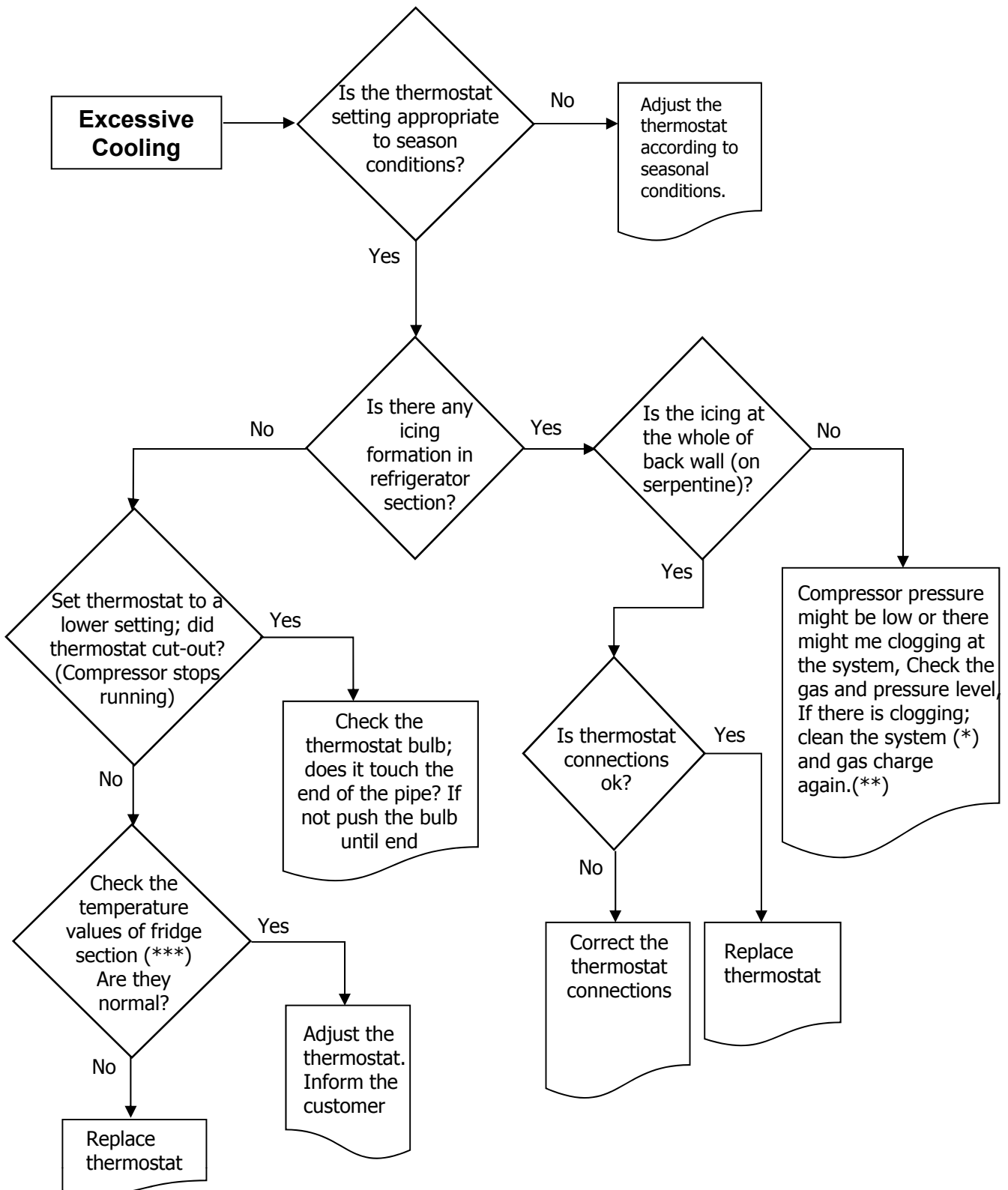




(\*) Check all pipes, tubes and welding points against gas leakage.

(\*\*) Before charging gas to system, change dryer and vacuum at least 30 minutes, then charge the system with amount written on label

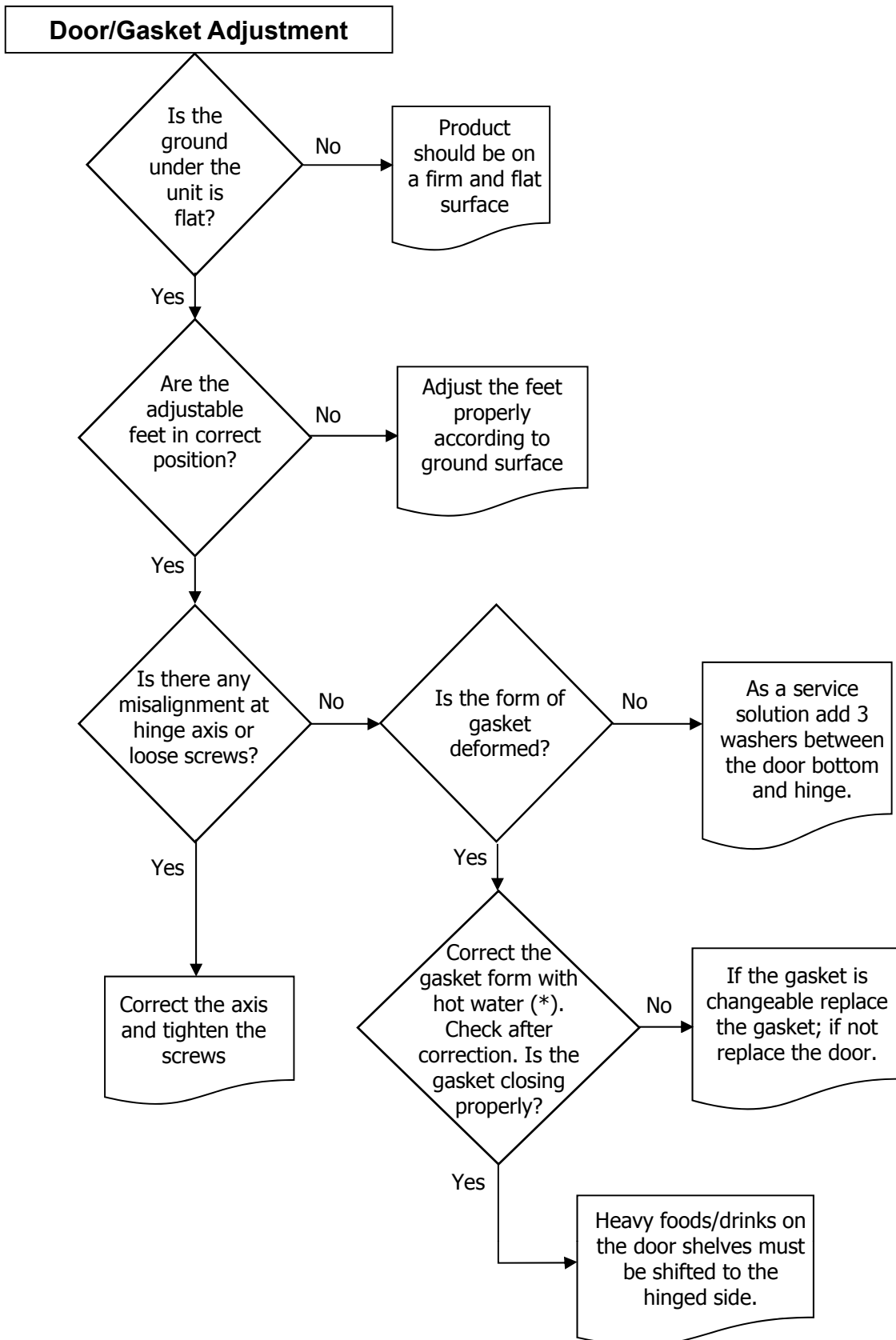
(\*\*\*) Compressor primary winding should be around 10 Ω and secondary around 15 Ω (at 25°C ambience temp.)



(\*) Check all pipes, tubes and welding points against gas leakage.

(\*\*) Before charging gas to system, change dryer and vacuum at least 30 minutes, then charge the system with amount written on label

(\*\*\*) It is advised that to take 1 day temperature record.



(\*). Correct the gasket form by the help of hot water and hair dryer.